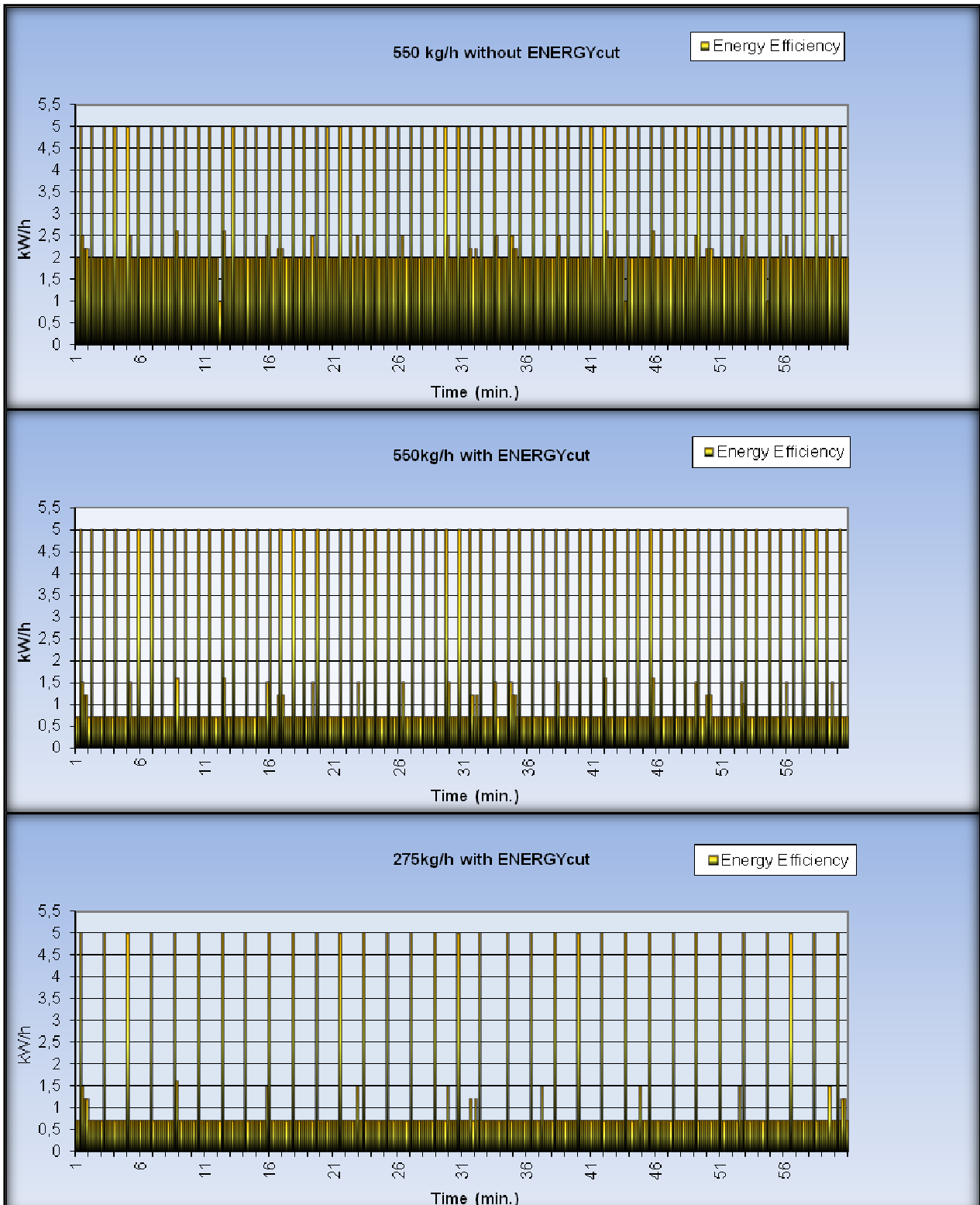


ENERGYcut

Energy savings with
Material Handling Systems



**PROCESS
CONTROL**



Direct comparison of energy efficiency with a throughput of 550kg/h without and with ENERGYcut (Tab. 1+2). Clear energy savings with 275kg/h (Tab. 3)

ENERGYcut

The new **ENERGYcut** controls with frequency converter and self-adapting intelligent power control for a maximum of energy savings, installed at the pump frame.
 With this controls the main material will be feed with the max. power.
 If there are difficult materials to convey, the convey power will be reduced to the absolute required minimum and in time without any convey request the energy consumption will go down to the lowest possible level. The line will be in this case still in stand by for accelerating speed up in case of a request.

With this method beside of the energy saving the noise level will be reduced significant.

Stand by		Cycle/ h	
A: 400 kg/h		66	
B: 100 kg/h		17	
C: 25 kg/h		4	
D: 25 kg/h		4	
Total 550 kg/h		91	
Days / year		300	
Day / h		24	
Costs/kWh		0,21	0,11
Usage kWh		2,86	
Total Energy Costs: €		4325	2265
OLD kWh	2,86	4325	
550 kg/h or 275 kg/h Solution till now with CRV without control panel			
NEW kWh	1,53	2313	
550 kg/h with ENERGYcut			
Savings € p.a.		2.012	1.054
NEW kWh	1,12	1694	
275 kg/h with ENERGYcut			
Savings € p.a.		2.631	1.380



PROCESS CONTROL Corporation

6875 Mimms Drive, Atlanta, GA 30340 USA
 Tel: (+1) 770 449-8810 Fax: (+1) 770 449-5445

PROCESS CONTROL GmbH

Industriestr. 15, 63633 Birstein, Deutschland
 Tel: (+49) 0 60 54 – 91 29 0 Fax: (+49) 0 60 54 – 91 29 99
 E-Mail: info@ProcessControl-GmbH.de
 Internet: www.ProcessControl-GmbH.de