

RP-Series

Vacuum Receiver for Dusty Material



The RP-Series: combined with PCC's Vacuum Power Units, it is designed for dependable, efficient conveying of dusty material (pictured is an RPG)

The RP-Series Vacuum Receiver from PROCESS CONTROL is part of a complete vacuum conveying system for in-plant distribution or machine/blender loading. When coupled with a vacuum pump and sequencing panel, the RP Series provides automatic loading of materials.

The RP's design accomplishes cleaning with conveying air – no plant compressed air is used for cleaning. The receiver's self-cleaning action is achieved by controlled timing of the sequencing vacuum valves. At the start of the cycle, air is drawn backward through one set of filter bags, dislodging any fines and

dropping them back into the hopper. After filling, the second set of filters is backflushed. Finally, both filters are opened; the resin is delivered to its destination.

The RP Series avoids carry-over of dust back to the vacuum power unit. Four filter bags in the RP Series feature large filter areas for low, stable pressure drop.

The RP Series Vacuum Receiver is low-maintenance: no valves come into contact with conveyed material and no tools are needed for filter changes.

Multiple station capability is engineered into RP-Series design, allowing use of vacuum valves. PROCESS CONTROL's RP Series is easily retrofitted to conform to your existing standard vacuum system. An optional modular control box operates valves from the existing sequencing fill signal to minimize field wiring.

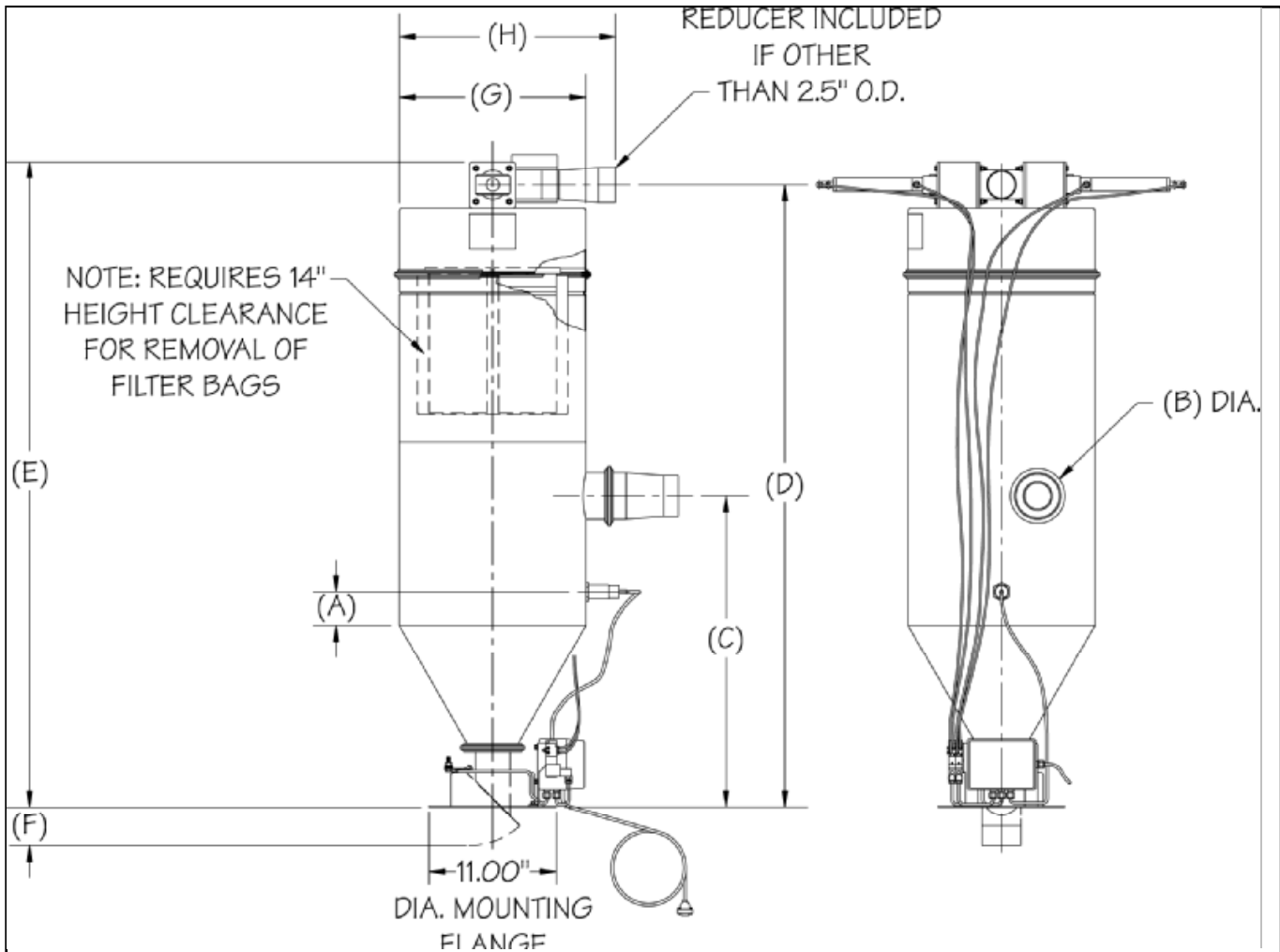
Standard Specifications

- ▶ air operated sequencing valve in lid requires 80-100 psi of filtered, lubricated shop air for solenoid actuators and control cylinders; the total supply air required per cycle is 0,01 cu.ft.
- ▶ internal self-cleaning filter bags for granular or dusty materials
- ▶ 24 V DC control voltage
- ▶ load level proximity switch
- ▶ flapper-type discharge valve with magnetic switch
- ▶ removable lid with V-band clamp
- ▶ mild steel construction

Options

- ▶ check valve for common material line applications
- ▶ swing-gate or knife-gate positive shut-off discharge valve
- ▶ 110V AC control voltage
- ▶ stainless steel construction
- ▶ Director®-Series sequencing control panel
- ▶ central vacuum power unit
- ▶ central dust collector

Vacuum Receiver for Dusty Material



The above shown receiver is represented with a weight-incriminated tab (Flapper Valve). The optional available swing valve is enlarging the height. Nearer statements will you get from PROCESS CONTROL. Every unit is tested before the shipping. Alterations of corresponding hints reservations.

SPECIFICATION

Model	Volume (dm ³)	Dimensions (mm)								Weight (kg)
		A	B	C	D	E	F	G	H	
RPF	11	63	50,8 63,5	505	1028	1079	85	305	395	68
RPG	15	106	76,2 88,9							
RPH	24	73	50,8 63,5	608	1287	1337	208	406	446	91
RPJ	40	194	76,2 88,9 101,6							



PROCESS CONTROL Corporation
Headquarters

6875 Mimms Drive, Atlanta, GA 30340 USA
 Tel: +1 770 449-8810 Fax: +1 770 449-5445

Plant for Europe

PROCESS CONTROL GmbH

Industriestr. 15, 63633 Birstein, Germany
 Tel: +49 (0) 60 54 - 91 29 0 Fax: +49 (0) 60 54 - 91 29 99
 E-Mail: info@ProcessControl-GmbH.de
 Internet: www.ProcessControl-GmbH.de