

HGB-Series

Gravitrol®-Weigh Hopper



The HGB Series: the precise weigh hopper component of an integrated Gravitrol®system (pictured above is an HGB012)

Designed for use as a part of an Gravitrol®system, the HGB series Weigh Hopper incorporates engineering and design breakthroughs to help achieve the optimal result in extrusion: a uniform product within tolerance at the lowest possible manufacturing cost.

The Gravitrol®system gives you total control over your mono-extrusion or coextrusion processes.

The system can be configured to control extruder rate by weight; layer percentages by weight; weight of extrudate by length; average thickness; and pipe or tube diameter.

The HGB Series Weigh Hopper is a central part of this system because it precisely monitors the amount of material consumed by the extruder. In effect, an extruder becomes a gravimetric metering device.

PCC's HGB mounts directly on the throat of your extruder, requiring no additional support. Standard hopper sizes control an extruder throughput at rates from 10 to 10,000 PPH. Higher rate hoppers are available on special order.

The HGB Series' clear polycarbonate inspection/cleanout door or sight-

glass allows visual inspection of hopper contents.

Each hopper has a PCC designed and build Weigh Module which connects to the load cell and precisely measures the extruder's material consumption. This information is digitized on the hopper for fast, error-free and noise-immune communications with the central Gravitrol® computer. Four-point overload protection on the hopper protects the weighing system from damage due to accidental contact.

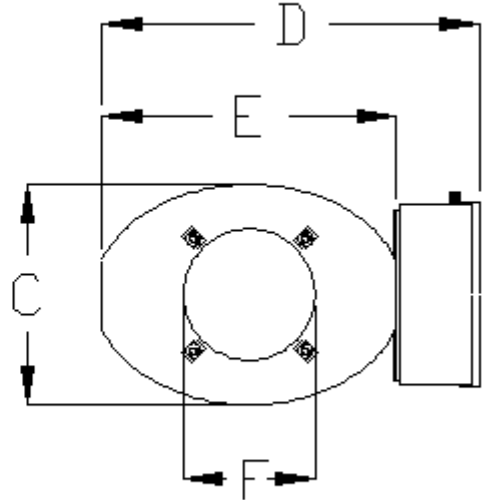
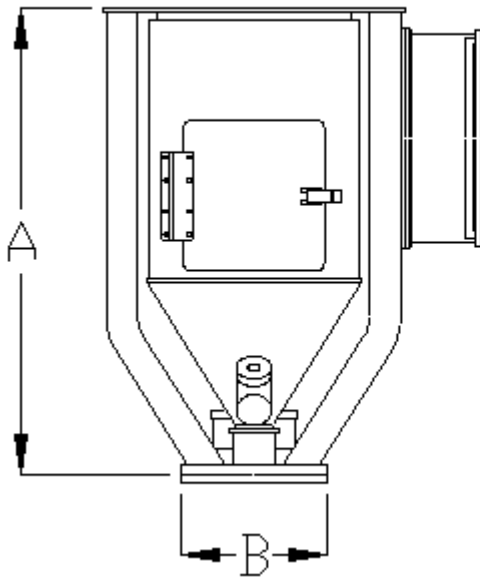
Standard Features

- integral loader support platform
- clear polycarbonate inspection/cleanout door (on 2.3 cu. Ft. models and larger)
- inspection sightglass on 003 and 006 models
- high-resolution weighing system
- integrates with a complete Gravitrol® extrusion control system for precise, consistent throughput control
- mild steel construction

Options

- high temperature design
- stainless steel construction
- special electricals

Gravitrol®-Weigh Hopper



SPECIFICATIONS for HGB SERIES WEIGH HOPPER

Model Number	Working Capacity (dm ³)	Measurements (mm)						Shipping Weight (kg)
		A	B	C	D	E	F	
HGB003	8,5	720	254	280	613	400	197	27,0
HGB006	17,0							34,0
HGB019*	54,0	946	280	432	785	575	254	70,0
HGB023	65,0	883						70,0
HGB045	128,0	1360						115,5

* Hopper is steep wall configured for flowable powder



PROCESS CONTROL GmbH

Industriestr. 15, 63633 Birstein, Deutschland
 Tel: (+49) 0 60 54 – 91 29 0 Fax: (+49) 0 60 54 – 91 29 99
 E-Mail: info@ProcessControl-GmbH.de
 Internet: www.ProcessControl-GmbH.de

PROCESS CONTROL Corporation

6875 Mimms Drive, Atlanta, GA 30340 USA
 Tel: (+1) 770 449-8810 Fax: (+1) 770 449-5445
 Internet: www.Process-Control.com